



# MONTHLY MEMBERSHIP PROGRESS REPORT

District 3 O

Results as of: 1/31/2016

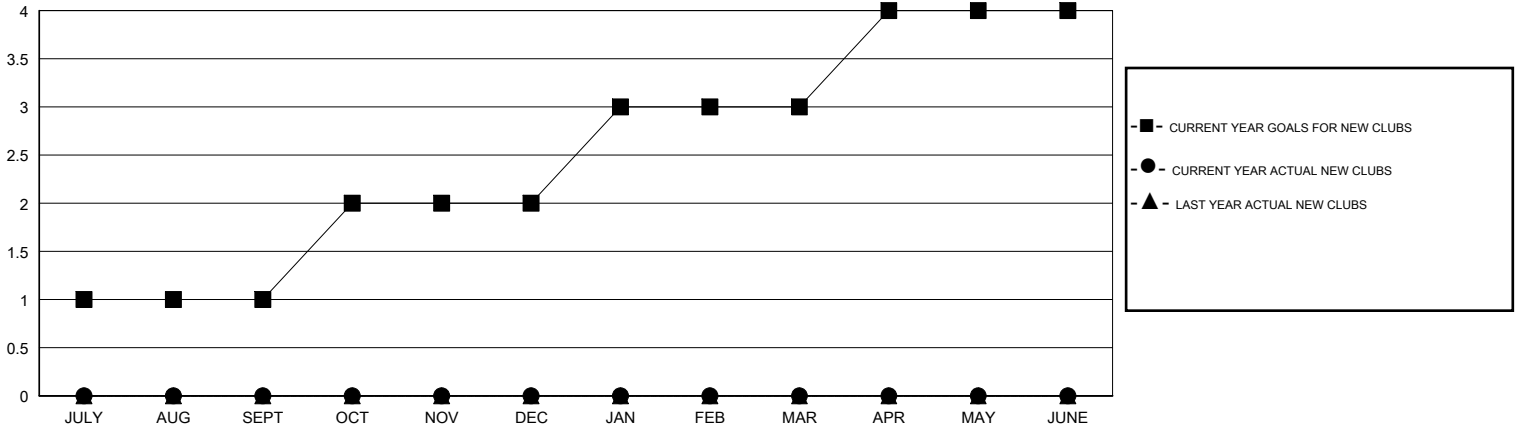
GMT: HAL GRIFFIN

LOCATION OKLAHOMA

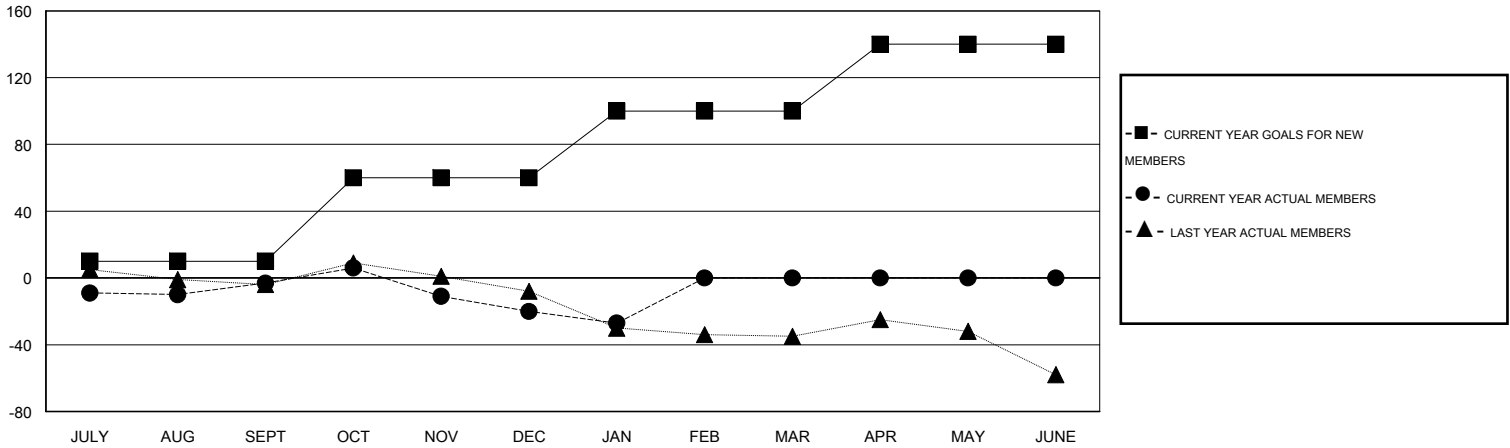
GMT CA 1

Clubs					Members				
RESULTS FOR 2015-2016					RESULTS FOR 2015-2016				
QUARTER	NEW CLUB GOAL	NEW CLUBS	DROPPED CLUBS	NET GAIN/LOSS	QUARTER	NEW MEMBER GOAL	CHARTER AND NEW MEMBERS ADDED	DROPPED MEMBERS	NET GAIN/LOSS
JULY/AUG/SEPT	1	0	0	0	JULY/AUG/SEPT	10	27	30	-3
OCT/NOV/DEC	1	0	1	-1	OCT/NOV/DEC	50	28	45	-17
JAN/FEB/MAR	1	0	0	0	JAN/FEB/MAR	40	5	12	-7
APR/MAY/JUNE	1	0	0	0	APR/MAY/JUNE	40	0	0	0

GOALS AND ACTUAL NEW CLUBS CUMULATIVE



GOALS AND ACTUAL MEMBERS CUMULATIVE



DROPPED CLUBS: 1	19 CLUBS OF 38 ADDED 1 OR MORE NEW MEMBERS	<u>GENDER DISTRIBUTION</u>	
		MALE	584 (65.54%)
<u>DROPPED MEMBERS</u>		FEMALE	307 (34.46%)
DECEASED	5	FAMILY UNIT MEMBERS 207 HEAD OF HOUSEHOLD 101 NON-HEAD OF HOUSEHOLD 106	
CLUB CANCELLED	19		
OTHER	63		
TOTAL	87	<a href="#">CLICK HERE FOR HEALTH ASSESSMENT DATA</a>	